



INSIGHTS TO IMPACT

Admitting

FPM (Full-time)
EFPM (Part-time)

Accreditation

All India Council for Technical Education (AICTE)
Association to Advance Collegiate Schools of Business (AACSB)
European Doctoral Programmes Association in Management and Business Administration (EDAMBA)
Responsible Research for Business and Management (RRBM)



| ABOUT FIIB

Established in the year 1995, FIIB has emerged as one of the top B-schools in Delhi NCR that focuses on providing a future-focussed, holistic business school experience. All our programs benefit equally from our unique advantages created as a result of the constant marrying of rigour and relevance in their design.

Doctoral Programmes at FIIB are guided by FIIB's philosophy of bringing practice and academia together and thus are enriched by a global set of academic advisors in the form of supervisors, mentors, faculty, and a curriculum advancing both theory and practice. FIIB's rich research ecosystem allows scholars to collaborate and network while learning. We welcome you to explore how a partnership with FIIB can be a rewarding opportunity for you!



OUR MISSION

Support the production of high-quality scholarship that advances business practices and is built upon a foundation of rigorous, scientific inquiry, and an interdisciplinary approach

WHY WE EXIST

To improve the integration of research and education in the main and emerging areas of business, so as to impact the advancement of management practices

WHAT WE OFFER

Interdisciplinary, responsible research practices in alignment with ethical principles aimed at developing scholars and teachers alike

HOW WE MAKE IT HAPPEN

By creating an outstanding climate of support for our faculty and doctoral researchers that includes strategically investing in promising research and researchers, as well as providing transparent administration, infrastructure, and streamlined processes

THE FIIB ADVANTAGE

Gain a doctoral degree recognized by the All India Council of Technical Education (AICTE) from a progressive and impactful B-School in a uniquely designed program



Unique and Dedicated Support Structure



Rich Research Ecosystem



Vibrant workshops and Bootcamps



Value-adding Persona Growth Module

| DOCTORAL PROGRAMME OVERVIEW

FIB offers 3-year Doctoral programmes approved by AICTE in two different modes- Fellow Programme in Management (full-time) and the Executive Fellow Programme in Management (part-time). The Programmes are designed to cater to the research and academic needs of innovative, dynamic, and focused individuals who aspire to advance their careers in teaching, research, or the corporate sector with an advanced research degree in management.

| OUR EFPM & FPM IS FULLY ACCREDITED BY THE:



All India Council for Technical Education (AICTE)



Member of AACSB (Association to Advance Collegiate Schools of Business)



Member of EDAMBA (European Doctoral Programmes Association in Management and Business Administration)



Responsible Research for Business and Management (RRBM)

| UNMATCHED SUPPORT & OPPORTUNITIES

COMPREHENSIVE SUPPORT

Tailored 24/7 e-learning resources, career workshops, personal growth modules, and mentorship for holistic scholar development.

FINANCIAL SUPPORT

As the programme is rigorous and intensive and expectations are high, we provide research scholarships to help scholars focus on academic pursuits.

PUBLICATION OPPORTUNITIES

Doctoral scholars featured in 17 journals of international repute, establishing themselves as opinion makers in their respective fields.

RESEARCH CONFERENCES

Annual participation in national and international conferences, fostering networking and collaboration.

FLEXIBILITY

Accommodating diverse research interests and personal commitments for a quality education with the flexibility professionals need.

FBR IN-HOUSE JOURNAL

Contribute to the 13-year-old interdisciplinary, peer-reviewed FBR journal, indexed in Scopus, ABS, UGC-Care, Cabell's Directory, and more.

| DOCTORAL SUPERVISORS

All our Professors in the Doctoral Program are accomplished researchers and recognized names in academia with proven thought leadership in their areas. They bring a balance of contemporary academic approach and practical experience and will challenge and inspire you to achieve excellence. They are seasoned researchers with publications in top international journals with expertise in diverse research techniques and methodologies. They have strong supervisory experience and have successfully supervised doctoral candidates.

FOR DETAILED PROFILES OF OUR FACULTY MEMBERS, VISIT [FIIIB.EDU.IN/FACULTY](https://www.fiiib.edu.in/faculty)

| RESEARCH ECOSYSTEM

The research ecosystem has been uniquely designed around the specific requirements of the doctoral candidates after a thoughtful reflection. It perfectly blends with the Program to provide support, direction and reinforcement at all stages. It is designed with the conscious intent to build a solid research foundation. It includes supportive research policies, exposure and opportunities to participate in international research events, workshops and boot camps delivered by international experts and research support in all forms to ensure the best learning.

We will match you with the supervisory team who shares your passion and has the expertise to shape your research. The Supervisory Team consists of accomplished Senior Academicians with proven thought leadership in their areas, expertise in diverse research techniques and methodologies, and rich doctoral supervision experience.

YOUR SUPERVISORY TEAM



MENTOR

- Supports your progression during the course work
- Provides guidance in the early part of the program for your research competency development needs



SUPERVISOR

- A domain expert faculty who provides academic guidance and practical support from the inception of the project to the submission of the thesis



CO-SUPERVISOR

- Works closely with the Supervisor and the candidate to provide additional guidance and expertise
- Complements the research strength of the supervisor through specialised inputs



SUBJECT EXPERT

- Provides subject area strength & guidance on the research topic & works closely with the team to ensure academic rigour and relevance

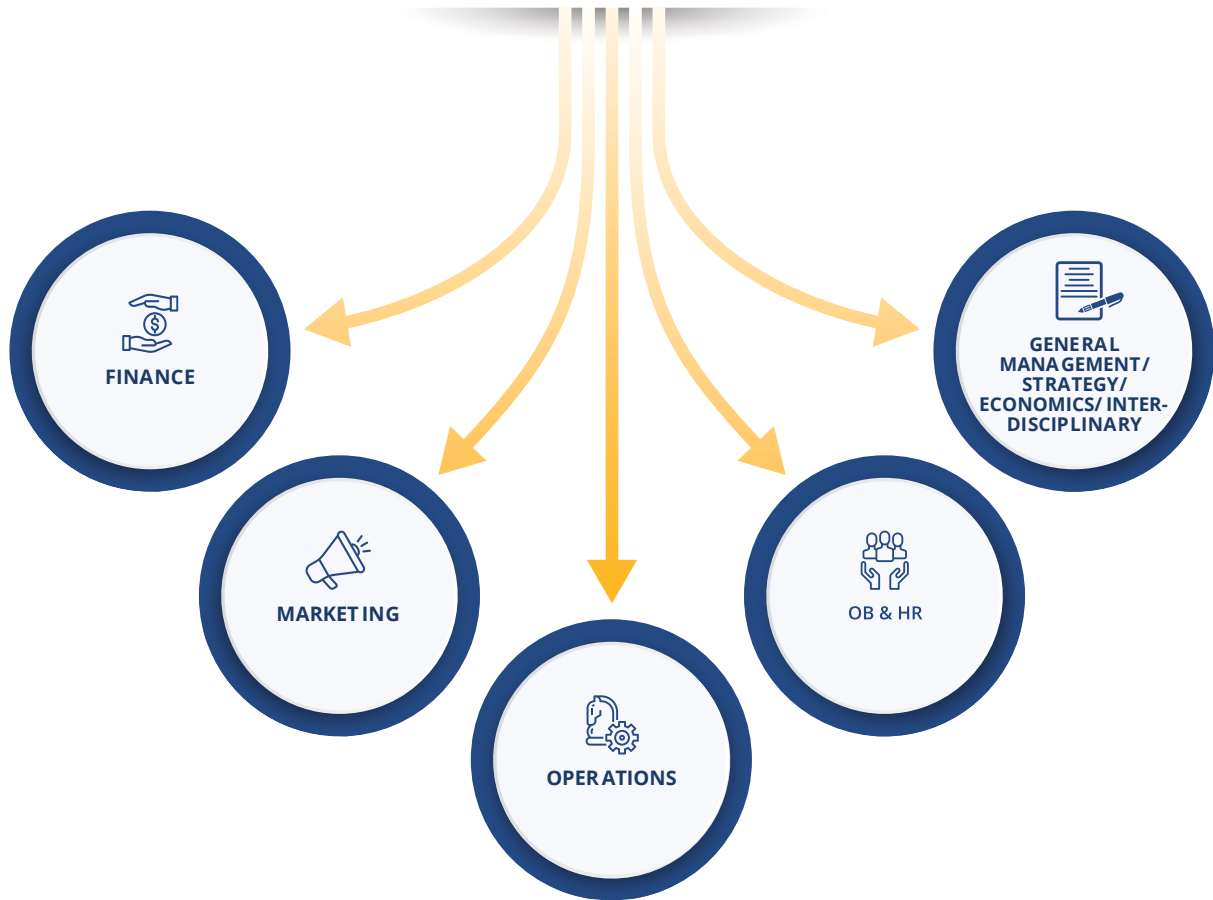


PERSONAL DEVELOPMENT COACH

- Provides opportunities for reflection and engagement to devise strategies for achieving goals that you set from the program

| AREAS OF SPECIALIZATION

The Programme, while offering specialization in different fields, also facilitates research in inter-disciplinary areas



For the development of doctoral thesis, the candidate can conduct research in various area of Management, Administration and other allied areas. Working professionals can also choose to work on a topic (aligned with the research areas above) specific to their Line of Business or LOB, making it a significant add-on to their career profile.

| FACULTY & SCHOLARS RESEARCH AREA



ABOUT EXECUTIVE FELLOW PROGRAMME IN MANAGEMENT (EFPM)

The program is designed to offer candidates an opportunity to systematically tackle a relevant and unresolved business problem through their academic work, and thus contribute to solving **real-world business challenges**. We offer you a rigorous journey that has been specially curated keeping the unique needs of a **working professional** in mind, so you do not have to choose between your doctoral ambitions and **career progression**. As a result of the programme, you will be able to create a differential edge over your professional counterparts by developing business **context-driven advanced research skills and competencies**. These will open newer career opportunities – propel into larger roles, diversify to consulting and academic roles, and ultimately build a portfolio career.

EFPM HIGHLIGHTS

- 01** Flexible combination of f2f teaching, online session, supervised research projects and independent study
- 02** Taught by accomplished faculty with extensive research and consulting experience
- 03** Strong Supervisory Team with complementary advisory strengths
- 04** Draw on different global perspectives to enrich your research
- 05** Opportunities to collaborate with a cohort of senior-level business executives
- 06** Developed to accommodate the needs of working business professionals
- 07** Designed to aid in career advancement and personal growth
- 08** Apply your learning for immediate professional impact

IDEAL CANDIDATE



Is a working professional with substantive experience in decision making within their organizations



Is intellectually curious to engage and work on solving a challenging real-life problem



Is motivated to meet the demands and rigour of the program



Is able to work in an independent and flexible manner during the course, communicating intensively with their academic supervisors

WHAT IS THE PROGRAM ABOUT

AIM

- Bridging the gap between academia and industry by amalgamating practice with scholarly research.
- Building rigor & interdisciplinary focus to link theory and practice.

FOR

- Working professionals looking for career progression.
- For transition to academia; or for academicians looking for part-time doctoral programmes.

DURATION

- 3-year (part-time).
- Expected time commitment of 12-15 hours per week of self-study.
- 4 mandatory week-long residencies in the first year covering coursework.

RESEARCH FOCUS

- Informed by a "Real-world" business problem.
- An interdisciplinary perspective.

PROGRAM STRUCTURE

AT-A-GLANCE

YEAR 1 (Course Work)

- 4 experiential residencies of 5 days each; comprising the core of the coursework requirements
- Provides an opportunity to work face-to-face with your supervisory team and other doctoral colleagues
- Also, include a social element to help build connections with your colleagues

YEAR 2 (Research Proposal)

- Continuous Assessment Seminar 1
- Comprehensive Examination
- Research Proposal Submission & Presentation
- Title Registration

YEAR 3 (Thesis Submission)

- Continuous Assessment Seminar 2
- Pre-Submission Seminar
- Thesis Submission
- Oral Defense Viva

RESIDENCIES

There are 4 mandatory residencies of 5 days each (Sat-Wed) during the first 12 months of the program. For the August 2024 intake, these are indicatively planned to be held in September 2024, December 2024, March 2025 and June 2025. These residencies will cover the entire core coursework required for the program.

RESIDENCY 1 Overview of Business Research Process

Course Modules

- Introduction to Business Research
- Introduction to Literature Review
- Philosophy and Methods

Workshops

- Personal Development
- Reading Academic Papers
- Making the Mentoring Relationship Work for You
- Working with Academic Integrity

RESIDENCY 2 Building the Research Competencies

Course Modules

- Applied Methods for Management Research
- Advanced Literature Review

Workshops

- Personal Development II
- Reference Management
- Finding the Right Literature
- Finding the Gap

RESIDENCY 3 Designing the Research

Course Modules

- Research Design
- Area Course- I
- Area Course- II

Workshops

- Personal Development III
- Finding your Paradigmatic Position

RESIDENCY 4 Research Methods & Data Analysis

Course Modules

- Qualitative Methods
- Quantitative Methods
- Area Course- III

Workshops

- Personal Development IV
- Ethics Approval Process
- Pathways to Impact

COMPLETION REQUIREMENTS

The completion of the Program is attained after a year on year progression of scholars achieved through Coursework (Year 1), Comprehensive Examination and Research Proposal (Year 2), and Open Seminar (Year 3). In addition, six-monthly Continuous Assessment Seminars throughout the Programme check the continued progress of the scholars. After successfully submitting the thesis and clearing the external defence, the final degree is awarded.

WORKSHOPS

During the 3 years, a number of workshops will be offered that will focus on techniques and methods, as well as on strengthening the softer competencies of the scholars. These will be optional and additional. For some of the workshops, an online and offline version will be held. An indicative list of workshops is included below:

- *Advanced Quantitative Techniques*
- *Advanced Qualitative Techniques*
- *Research Paper Writing*
- *Thesis Writing*
- *Proposal Writing*
- *Publications Clinic*
- *Developing your Consulting Practice*
- *Giving back through Reviews*
- *Preparing to Teach*

ABOUT FELLOW PROGRAMME IN MANAGEMENT (FPM)

The Programme offers an extensive and exemplary blend of **learning, teaching, and conducting scientific research**. It aims to build a community of strong **academicians, researchers, and management leaders**. Scholars will acquire knowledge and research proficiency in the chosen field of **business management** and learn through experience to design and execute a major piece of original scholarly work. It offers a training ground for a stimulating and fulfilling career breeding rigorous, pertinent research that impacts practice.

FPM HIGHLIGHTS

- 01 *Develop academic and research acumen in the specialized field of study*
- 02 *Offers an experience to learn, and teach, business management*
- 03 *Conceptualize, design, develop, and publish scholarly work with reputed Journals in Management*
- 04 *Strong Supervisory Team with complimentary advisory strengths*
- 05 *Opportunities to learn and collaborate with experts in the chosen field of study*
- 06 *Stirring global perspective for strengthening research*
- 07 *Equip candidates to embrace career opportunities in academia and industry*
- 08 *Scholarships available for three years*

IDEAL CANDIDATE



Students/Professionals who want to pursue a career in advanced research and academics (including teaching)



Is intellectually curious and passionate about Academia and Research



Is possessing high scholastic ability, aptitude for research and analytical skills



Is motivated to meet the demands and rigor of the program

WHAT IS THE PROGRAM ABOUT

AIM

- Strengthening theory and thereby preparing scholars for their future pursuit in academia and research

FOR

- Individuals who aspire to advance their career in teaching, research, or corporate sector with an advanced research degree in management

DURATION

- 3 years (full-time)
- Expected commitment to institutional activities is about 10 hours per week
- 12 months of mandatory coursework

RESEARCH FOCUS

- Informed by the academic agenda and scholarly practice
- Appreciation for the production of Intellectual Contributions

PROGRAM STRUCTURE

AT-A-GLANCE

YEAR 1 (Course Work)

- Mix of compulsory & area-specific courses
- Divided into 3 Core modules- Foundation, Domain, & Experiential
- Includes classroom sessions, seminars & workshops

YEAR 2 (Research Proposal)

- Continuous Assessment Seminar 1& 2
- Comprehensive Examination
- Research proposal Presentation and Submission
- Title Registration

YEAR 3 (Thesis Submission)

- Continuous Assessment Seminar 3 & 4
- Open Seminar
- Thesis Submission
- Oral Defense Viva

MODULES OVERVIEW

There are 3 modules of 4 months each during the first 12 months of the program. For the August 2024 intake, these are indicatively planned to be held in September- December 2024; January to May 2025; June to August 2025.

These modules will cover the entire coursework for the program.

MODULE 1

Building Foundation of Research

- Introduction to Business Research
- Literature Review-Fundamentals to Advanced
- Introduction to Philosophy and Methodology
- Personal Development I

MODULE 2

Instituting Research and Domain Competencies

- Overview of Business Research Methods
- Qualitative Methods-Tools and Process
- Quantitative Methods-Tools and Process
- Area Specific Courses* (Management courses- 3)

MODULE 3

Experiential Learning and Applications

- Choice based workshop & Seminars*
- Personal Development II

*CHOICE-BASED WORKSHOPS & SEMINARS

- Advanced Quantitative Techniques-SEM & PLS; Experimental Design; Econometrics
- Advanced Qualitative Techniques-Action Research; Ethnography; Netnography; Text Analysis; Sentiment Analysis
- Workshop on Case study development
- Workshop on Research Paper Writing
- Workshop on Proposal Writing
- Workshop on Thesis Writing
- Workshop on Research Ethics and Academic Integrity

Apart from Optional Workshops, there is also a list of catalog courses that scholars can choose as per their interest

LIST OF CATALOGUE COURSES

- Preparing for Interviews
- Publications Clinic
- Teaching Pedagogy- Contemporary and Innovative Approaches
- Instrument/Scale Development
- Reviewing Thesis/Papers
- Reference Management
- Developing Consultancy Projects

ENTRY REQUIREMENTS

EFPM

EDUCATION

Master's Degree or equivalent in Engineering and Technology/ Management/ Economics/Social Science/ Biological Science/ Pure Science/ Commerce/ Humanities with at least 60% marks or equivalent grade point from an institution/ university recognized by AICTE.

Or

Five-year integrated Master's degree in Business Administration, tourism management, business economics, commerce or allied domains related to business and management with at least 60% marks or an equivalent grade point from an institution/university recognized by AICTE.

Or

A graduate degree with professional qualification like CA, CS, ICWA.

Or

A Bachelor's Degree in Engineering or Technology with a minimum of 60% marks or equivalent grade point average. Those in the final year of their engineering degree may also apply.

EXPERIENCE

For EFPM, one year experience in corporate or academics is mandatory.

APTITUDE EXAM

JRF/NET by UGC or CSIR*

Or

CAT/GMAT/XAT/CMAT/ATMA*

Or

Research Aptitude Test (RAT) conducted by FIIB**

** Should not be taken earlier than two years from the date of admission*

*** Please contact at infodoctoralprogram@fiib.edu.in for the next available FIIB RAT date*

FPM

EDUCATION

Master's Degree or equivalent in Engineering and Technology/ Management/ Economics/Social Science/ Biological Science/ Pure Science/ Commerce/ Humanities with at least 60% marks or equivalent grade point from an institution/ university recognized by AICTE.

Or

Five-year integrated Master's degree in Business Administration, tourism management, business economics, commerce or allied domains related to business and management with at least 60% marks or an equivalent grade point from an institution/university recognized by AICTE.

Or

A graduate degree with professional qualification like CA, CS, ICWA.

Or

A Bachelor's Degree in Engineering or Technology with a minimum of 60% marks or equivalent grade point average. Those in the final year of their engineering degree may also apply.

APTITUDE EXAM

JRF/NET by UGC or CSIR* or CAT/MAT/GMAT/XAT/ATMA or Research Aptitude Test (RAT) conducted by FIIB**

HOW TO APPLY

A COMPLETED APPLICATION COMPRISES THE FOLLOWING:

FPM

- Application Form
- Academic CV
- A 3000-Word Research Proposal
- Academic Statement of Purpose (Motivation Letter)
- Research Aptitude Test Score
- Personal Interview

EFPM

- Application Form
- Industry CV
- A 1500-Word Research Outline
- Personal Statement of Purpose (Motivation Letter)
- Research Aptitude Test Score
- One Letter Of Recommendation
- Personal Interview

| FEES & FINANCING

EFPM

Total Rs 4,50,000* (estimated for completion in 3 years), Refundable Security Deposit of Rs 20,000

YEAR 1	YEAR 2	YEAR 3
INR 1,50,000	INR 1,50,000	INR 1,50,000

FPM

Total Rs 1,50,000* (estimated for completion in 3 years), Refundable Security Deposit of Rs 20,000

YEAR 1	YEAR 2	YEAR 3
INR 50,000	INR 50,000	INR 50,000

FINANCIAL SUPPORT:

In the first year, scholars will receive Rs. 40,000 per month, followed by Rs. 45,000 per month in the second year, and an impressive stipend of Rs. 50,000 per month in the third year!

YOUR JOURNEY STARTS NOW

Join FIIB community to shape the
future of business.

Disclaimer: We endeavour to provide our students with all the offerings/ facilities/experiences/services outlined in this brochure and the institute will make all the efforts that are reasonable and consistent with accepted practices in the education industry to deliver or provide access to these. However, in no event shall the Institute be responsible or liable for any failure or delay in the performance, delivery or access to mentioned offerings/ facilities/experiences/services committed and of its obligations hereunder arising out of or caused by, directly or indirectly, forces beyond its control, including, without limitation, natural or man-made calamities, work stoppages, strikes or bandhs, accidents, acts of war or terrorism, civil or military disturbances, nuclear or natural catastrophes or acts of God, pandemic, and interruptions, loss or malfunctions of utilities, communications or computer (software and hardware) services. In such situations or circumstances, the institute shall make and use all reasonable efforts that are consistent with accepted practices in the education industry to resume performance and to deliver as practicable under the circumstances.



infodoctoralprogram@fiib.edu.in | +91 7428344339

Plot No. 5, Rao Tula Ram Marg, Opposite Army R&R Hospital,
Vasant Vihar, New Delhi, Delhi 110057


www.fiib.edu.in | [@fiibindia](https://www.instagram.com/fiibindia)